

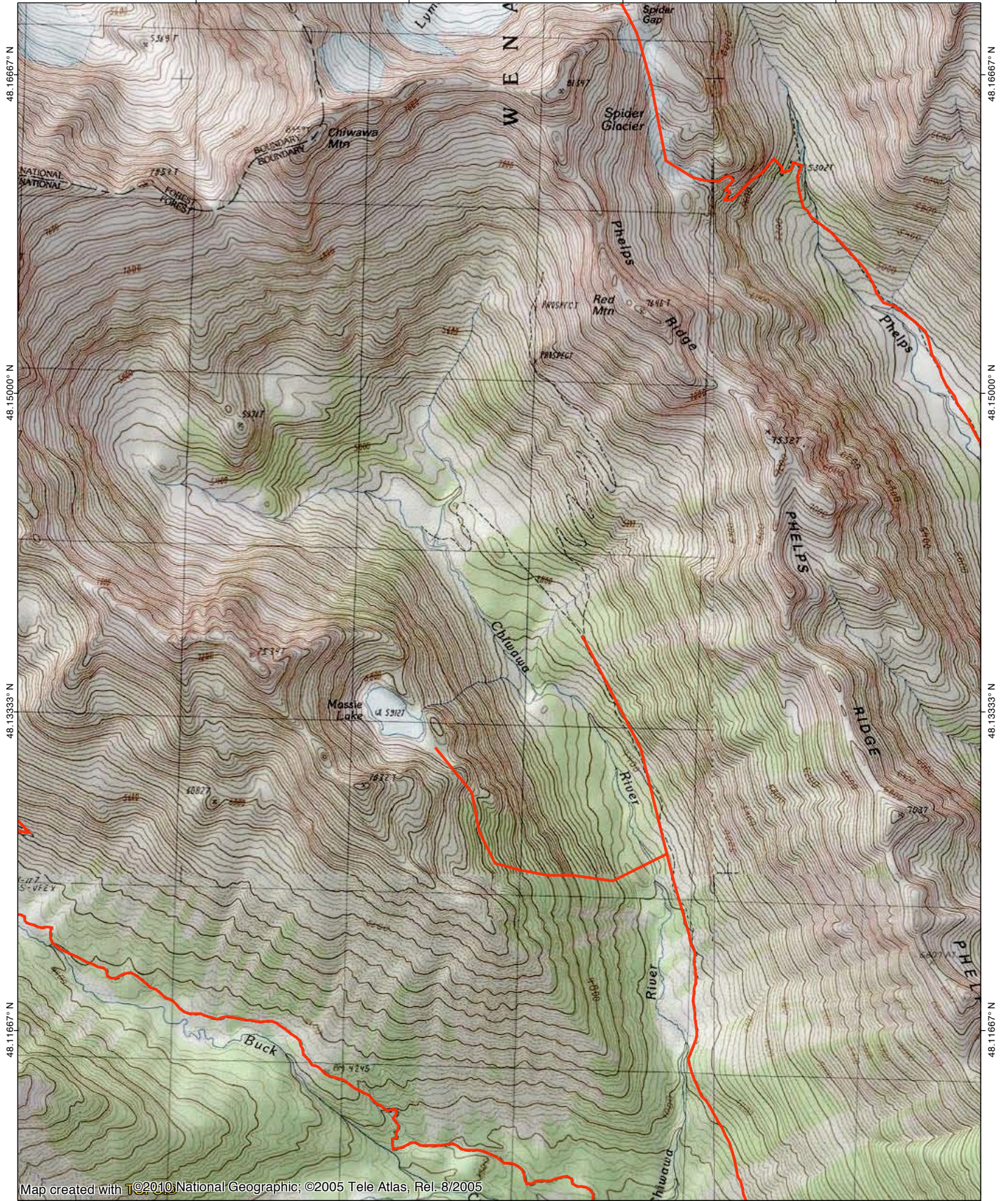
TOPO! map printed on 11/12/11 from "Phelps Creek.tpo"

120.91667° W

120.90000° W

120.88333° W

WGS84 120.86667° W



48.16667° N

48.15000° N

48.13333° N

48.11667° N

48.16667° N

48.15000° N

48.13333° N

48.11667° N

Map created with T©2010 National Geographic; ©2005 Tele Atlas, Rel. 8/2005

120.91667° W

120.90000° W

120.88333° W

WGS84 120.86667° W

